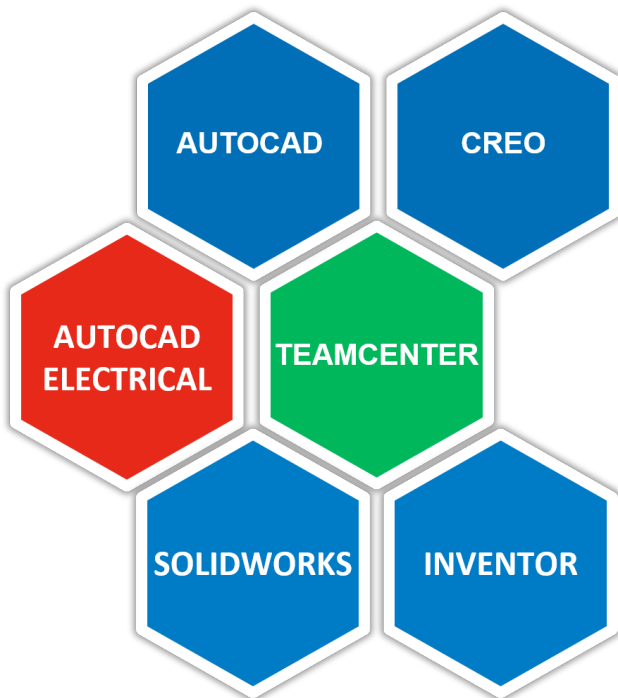
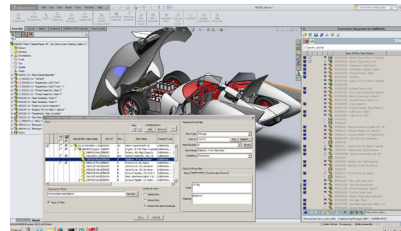


# AutoCAD, AutoCAD Electrical, Creo, INVENTOR & SOLIDWORKS Integrations for Teamcenter

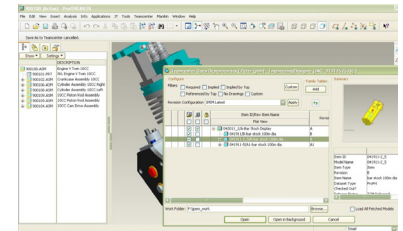


## The Teamcenter integration partner that customers trust

When you have a complex PLM integration project, you need an experienced partner who can move your project forward efficiently and securely. ITI brings more than 30 years of experience developing PLM, CAD and ERP integrations under vendor and/or OEM agreements with the major PLM vendors.



Teamcenter integration for SOLIDWORKS



Teamcenter integration for Creo

### ITI delivers value for PLM/CAD integration

The following integrations are developed by ITI and sold by Siemens PLM:

- Teamcenter Integration for Autodesk AutoCAD (TCAA)
- Teamcenter Integration for Autodesk AutoCAD Electrical (TCAA-E)
- Teamcenter Integration for Creo (IPEM)
- Teamcenter Integration for Autodesk INVENTOR (TCAI)
- Teamcenter Integration for SOLIDWORKS (SWIM)

These integrations provide a bridge between heterogeneous design systems and Teamcenter as the system of record. They improve efficiency while enabling users to focus on product development. In addition, users are able to manage data with Teamcenter with minimal effort, referring to clients only for virtual paperwork such as sign-offs and ECO processing.

By using Teamcenter as a CAD neutral format, downstream users are given direct

access to data when appropriate without interrupting the CAD users. And since the integrations follow all rules established in Teamcenter, groups such as Manufacturing, Procurement and Production can seamlessly consume the CAD data downstream without disrupting corporate Teamcenter practices.

Our proven integration implementation approach has been used by hundreds of customers, representing over 20,000 licenses worldwide.

### Integration Features

- Create new
- Save-as (clone)
- Rename
- Check-in/Check-out
- Attribute synch
- PLM change status/refresh
- Named baseline (establish and retrieve)
- E-BoM synch
- Derived output (2D drawing viewing)
- Derived output (3D model viewing)
- Lifecycle Mgt. (promote, demote, release)
- Revise

### About ITI, a Wipro company

ITI is the global leader providing reliable interoperability, validation, and migration solutions for product data and related systems.

ITI solves complex product data interoperability problems so the world's leading manufacturers can focus on making great products.

ITI is a wholly owned US-based subsidiary of Wipro, Ltd, within the Industrial & Engineering Services (IES) business. IES provides customers with a platform to innovate and engineer the next generation of products and platforms at scale.

www.iti-global.com  
info@iti-global.com  
1-800-783-9199

5303 DuPont Circle  
Milford, OH 45150  
USA

