

Collaboration and Process Automation

DEXcenter

Support

Native

- CATIA V4
- CATIA V5
- Creo/Wildfire
- Inventor
- NX
- SOLIDWORKS

Neutral

- ACIS
- DXF/DWG
- IGES
- JT Open
- Parasolid
- STEP
- 3D PDF

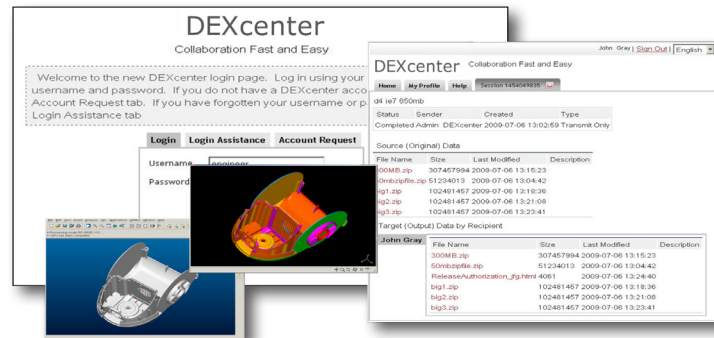
Platforms

- Windows
- Linux

DEXcenter provides partner and supplier collaboration with managed secure file transfer and CAD process automation for multi-CAD and Model Based Enterprise (MBE) scenarios. DEXcenter is a standards-driven, easy-to-use solution that can be integrated with PLM or other enterprise applications on a vendor-neutral platform.

- Translate native into neutral and other native CAD formats
- Validate and evaluate CAD models for manufacturing usage
- Add intellectual property and export regulatory markings to CAD models
- Document ECO changes by programmatically comparing different revisions
- Create and verify technical data packages

Corporate product data is your most valuable asset, yet it is frequently put at risk. When exchanged through DEXcenter, proprietary data is encrypted to prevent interception. Records of every exchange are maintained to validate what was sent, when it was sent and when it was received.



Process Automation Features

- Find thousands of CAD automation tasks and workflows available
- Use CAD system, CADfix and Proficiency for BREP and feature-based translation between different native CAD and/or neutral formats
- Create ECO documentation of solid models in 3D PDF file format using CADIQ
- Check producibility for unmanufacturable or costly manufacturing issues using CADIQ
- Compare derivative CAD models to validate they are the same or identify differences
- Generate CATIA V5 MBD models from solid models and associated drawings
- Simplify or restructure models to satisfy customer requirements or protect intellectual property rights before supplying to partners

Exchange Features

- Push-button exchange - easy for even non-CAD users
- Secure encrypted transmission via HTTPS/SFTP
- ITAR/EAR regulatory compliance
- Tracking/reporting
- SOA capability to facilitate connecting to enterprise systems

"DEXcenter's consistency and reliability translates into improved process efficiency and significant time savings."

- K.J. Kim, Samsung Electronics, Inc.

About ITI

ITI is the global leader providing reliable interoperability, validation and migration solutions for product data and related systems. Our customers recognize the value in having a trusted solution partner that provides more than just software. ITI solves complex product data interoperability problems so that the world's leading manufacturers can focus on making great products. You need to keep your engineering initiatives moving forward.

Create Momentum 

www.iti-global.com
info@iti-global.com
1-800-783-9199

World Headquarters:
5303 DuPont Circle
Milford, OH 45150 USA

