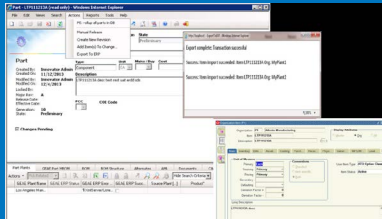
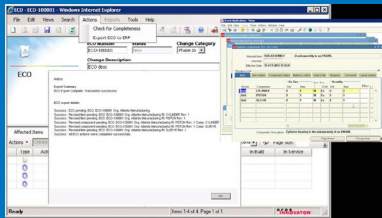


ITI Solution: Oracle ERP Connector for Aras Innovator

The Aras Innovator Integration Partner that Customers Trust



Innovator engineering part export to Oracle ERP



Innovator E-BoM export with Oracle ERP



When you have a complex PLM integration project, you need an experienced partner who can move your project forward efficiently and securely. ITI brings more than 30 years of experience developing PLM, CAD and ERP integrations under vendor and/or OEM agreements with the major PLM vendors.

ITI Delivers Faster Time to Market through PLM/ERP Integration

The Oracle ERP Connector with Aras Innovator is developed by ITI and sold by Aras PLM. ITI's connector automates the bi-directional flow of information between PLM and one or many ERP systems. The connector eliminates the duplication of data entry efforts, eliminating human errors.

Improved process efficiency is found as the connector offers consistent change process, E-BoM management, and release process to ERP. The connector dovetails the product engineering process into complex ERP production planning and operating processes.

By using the Oracle ERP connector to Innovator, customers have early visibility access to key information such as cost, on-hand inventory, item status, etc., which helps with critical decision making. Seamless, frequent engineering changes are facilitated with short cycles, speeding your time to market.

Our proven integration implementation approach has been used by hundreds of customers, representing over 20,000 licenses worldwide.

Integration Features

- Engineering parts export to ERP
- ECO export to ERP
- New engineering BoM export
- Incremental BoM changes export, PLM vs ERP BoM compare
- Item substitutes, reference designators export, automated effectivity date management
- Manufacturing parts import to PLM
- Multiple manufacturing plant integration support
- Multiple ERP systems connector support
- Flexible and extensible bi-directional attribute mapping support
- Robust user exits support to facilitate customer extensions
- Supports independent upgrades to the PLM and ERP systems



About ITI, a Wipro company

ITI is the global leader providing reliable interoperability, validation, and migration solutions for product data and related systems. ITI solves complex product data interoperability problems so the world's leading manufacturers can focus on making great products. ITI is a wholly owned US-based subsidiary of Wipro, Ltd, and exists within the Wipro Engineering business. Wipro Engineering provides customers with a platform to innovate and engineer the next generation of products and platforms at scale.